



WashU



IN
ST. LOUIS
FOR
ST. LOUIS





“It’s time to double down on our role and impact in St. Louis...

We are Washington University *because of* St. Louis.

We are proud to be Washington University *in* St. Louis.

And, today, I am calling us to be Washington University *for* St. Louis.”

Chancellor Andrew D. Martin

Inaugural Address

October 3, 2019



Our Commitment

We are committed to serving our community as a dedicated partner. Our strategic framework includes three areas:



Enrich Quality of Life
*through our mission of research,
education, and patient care*



**Attract & Retain
Exceptional Talent**
*through our unique position
as a global talent magnet*



**Contribute to a Vibrant
& Equitable Region**
*through our operations and
strategic partnerships*





Community Pillar

Here
and
Next



School of Continuing and Professional Studies (CAPS)



St. Louis Confluence Collaborative



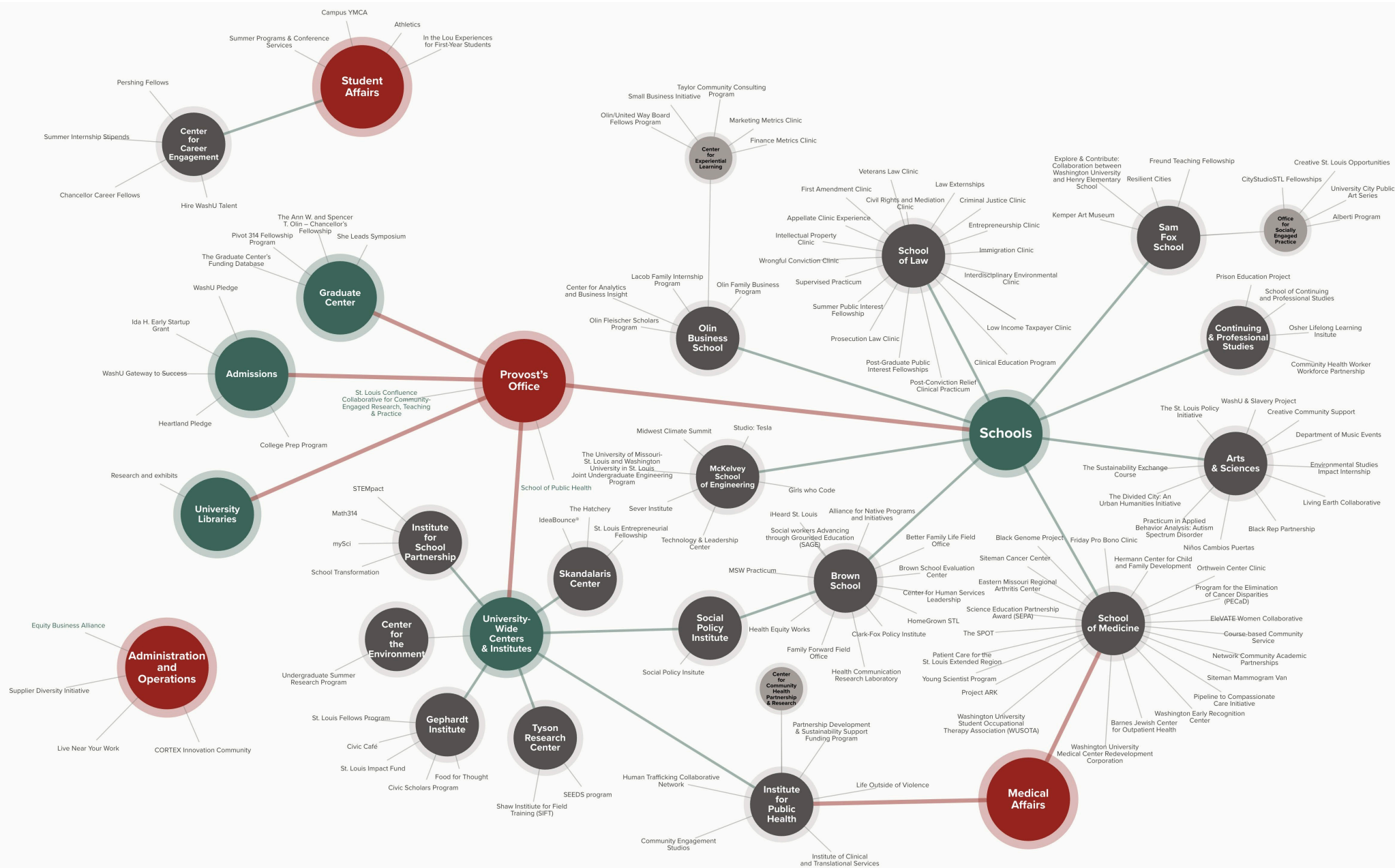


“The community
and the university
grow together.”

—Raymond H. Tucker



St. Louis Initiatives Ecosystem Map



Local Restaurants on the Danforth Campus



WashU College Prep Program





SKANDALARIS
CENTER
FOR INTERDISCIPLINARY
INNOVATION AND
ENTREPRENEURSHIP

**WashU Venture Network
Follow-on Investments**

PRESENTED BY

WashU IN ST. LOUIS FOR ST. LOUIS

THE TEMPEST
DIRECTED BY ICHU BOCCH

"In the Lou" + St. Louis Shakespeare Festival
production on Danforth Campus



Gephardt Institute for Civic &
Community Engagement
St. Louis Fellows Program



WashU Community Engagement Office

A “front door” for the St. Louis community.

Anchor Initiatives

- St. Louis Initiatives team, Office of the Chancellor
- Center for Community Health Partnerships and Research
- St. Louis Confluence Collaborative
- School of Continuing and Professional Studies EMPOWER Program



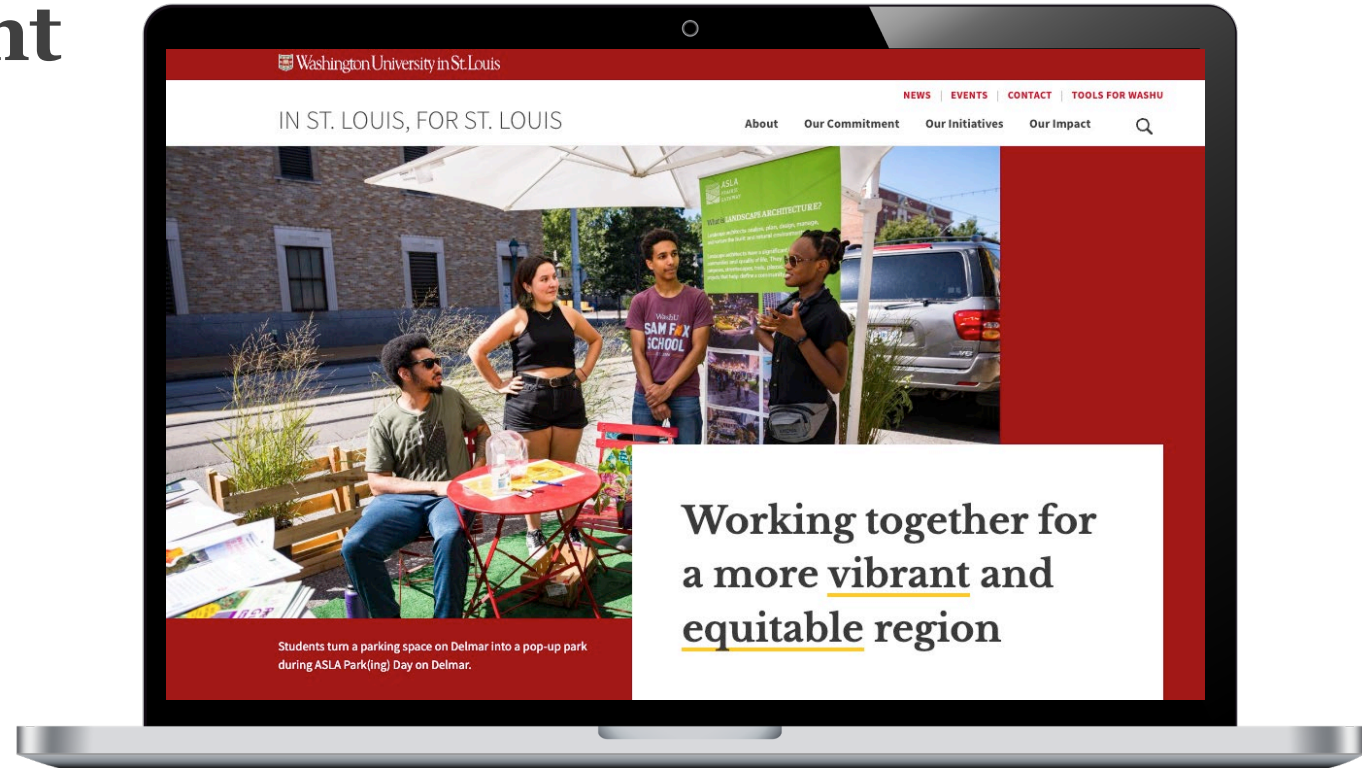
Audience Engagement

Website

stlouis.washu.edu

Social Media

- Twitter/X: @WashUforSTL
- Instagram: @washuforstl
- LinkedIn:
WashU In St. Louis For St. Louis



Scan the QR code to visit
our website:

